

11033 West Pico Boulevard

West Los Angeles, California

FOR LEASE

For further information or tour,
please contact exclusive agents:

Team Pollock/Einbund

Marc Pollock

First Vice President

310.550.2600

marc.pollock@cbre.com

Mark Einbund

First Vice President

310.550.2565

mark.einbund@cbre.com

CB Richard Ellis, Inc.
1840 Century Park East
Suite 700
Los Angeles, CA 90067

main: 310.550.2500

fax: 310.550.2691



PRIME PICO BOULEVARD CORNER RETAIL. . .

SIZE:

Approximately 2,570 square feet of ground floor space

ASKING:

\$2.75 NNN (NNN = \$0.52)

PARKING:

2 reserved parking spaces in rear of building

HIGHLIGHTS

- ▶ 25+ feet of Pico Boulevard frontage with corner exposure;
- ▶ Adjacent to the 405 and 10 Freeways;
- ▶ Blocks from the Westside Pavillion, a 759,200 square foot regional mall anchored by Nordstrom and Robinson's May;
- ▶ Neighbors include Anawalt Lumber, Barbeques Galore, La Z Boy Furniture Galleries, Ken Crane's Big Screen Television, Centinela Feed & Pet, Smart & Final, Party City, The Good Guys/Comp USA, Pampa Furniture, Barnes & Noble Booksellers, and many other nationally and regionally recognized stores and restaurants.

Additional information on this
offering can be viewed at
www.WestsideRetail.com

CBRE
CB RICHARD ELLIS

© 2004 CB Richard Ellis, Inc. The information above has been obtained from sources believed reliable. While we do not doubt its accuracy, we have not verified it and make no guarantee, warranty or representation about it. It is your responsibility to independently confirm its accuracy and completeness. Any projections, opinions, assumptions or estimates used are for example only and do not represent the current or future performance of the property. The value of this transaction to you depends on tax and other factors which should be evaluated by your tax, financial and legal advisors. You and your advisors should conduct a careful, independent investigation of the property to determine to your satisfaction the suitability of the property for your needs.

11033 West Pico Boulevard

West Los Angeles, California

FOR LEASE

For further information or tour,
please contact exclusive agents:

Team Pollock/Einbund

Marc Pollock

First Vice President

310.550.2600

marc.pollock@cbre.com

Mark Einbund

First Vice President

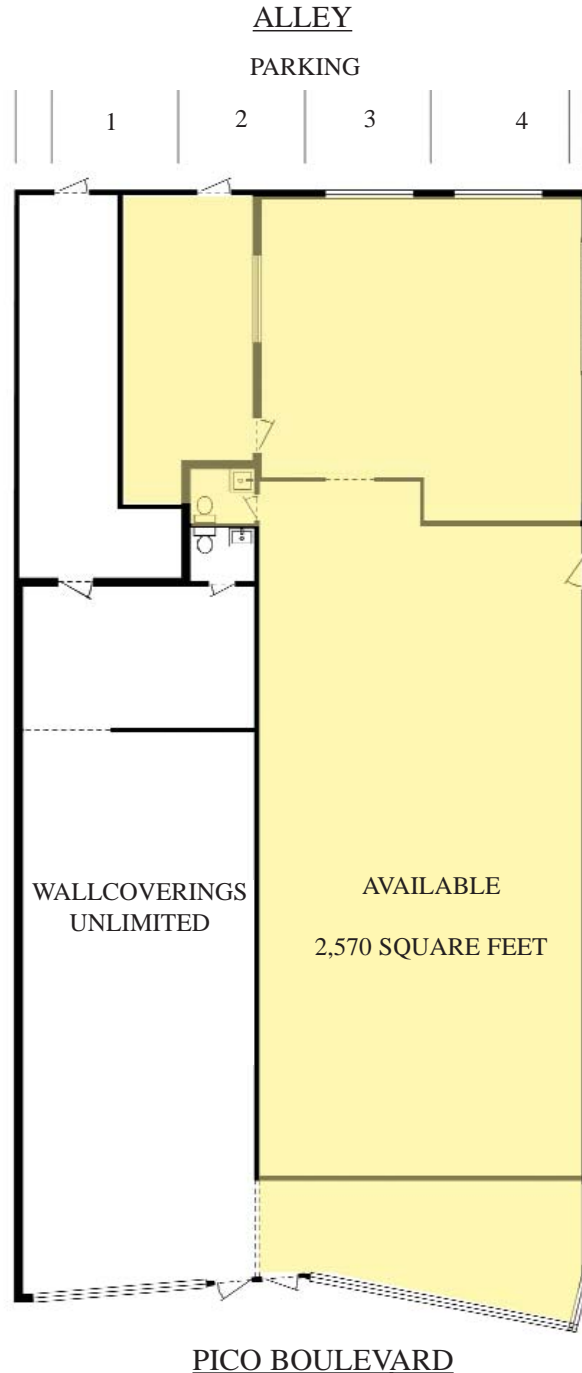
310.550.2565

mark.einbund@cbre.com

CB Richard Ellis, Inc.
1840 Century Park East
Suite 700
Los Angeles, CA 90067

main: 310.550.2500

fax: 310.550.2691



Additional information on this
offering can be viewed at
www.WestsideRetail.com

CBRE
CB RICHARD ELLIS

© 2004 CB Richard Ellis, Inc. The information above has been obtained from sources believed reliable. While we do not doubt its accuracy, we have not verified it and make no guarantee, warranty or representation about it. It is your responsibility to independently confirm its accuracy and completeness. Any projections, opinions, assumptions or estimates used are for example only and do not represent the current or future performance of the property. The value of this transaction to you depends on tax and other factors which should be evaluated by your tax, financial and legal advisors. You and your advisors should conduct a careful, independent investigation of the property to determine to your satisfaction the suitability of the property for your needs.